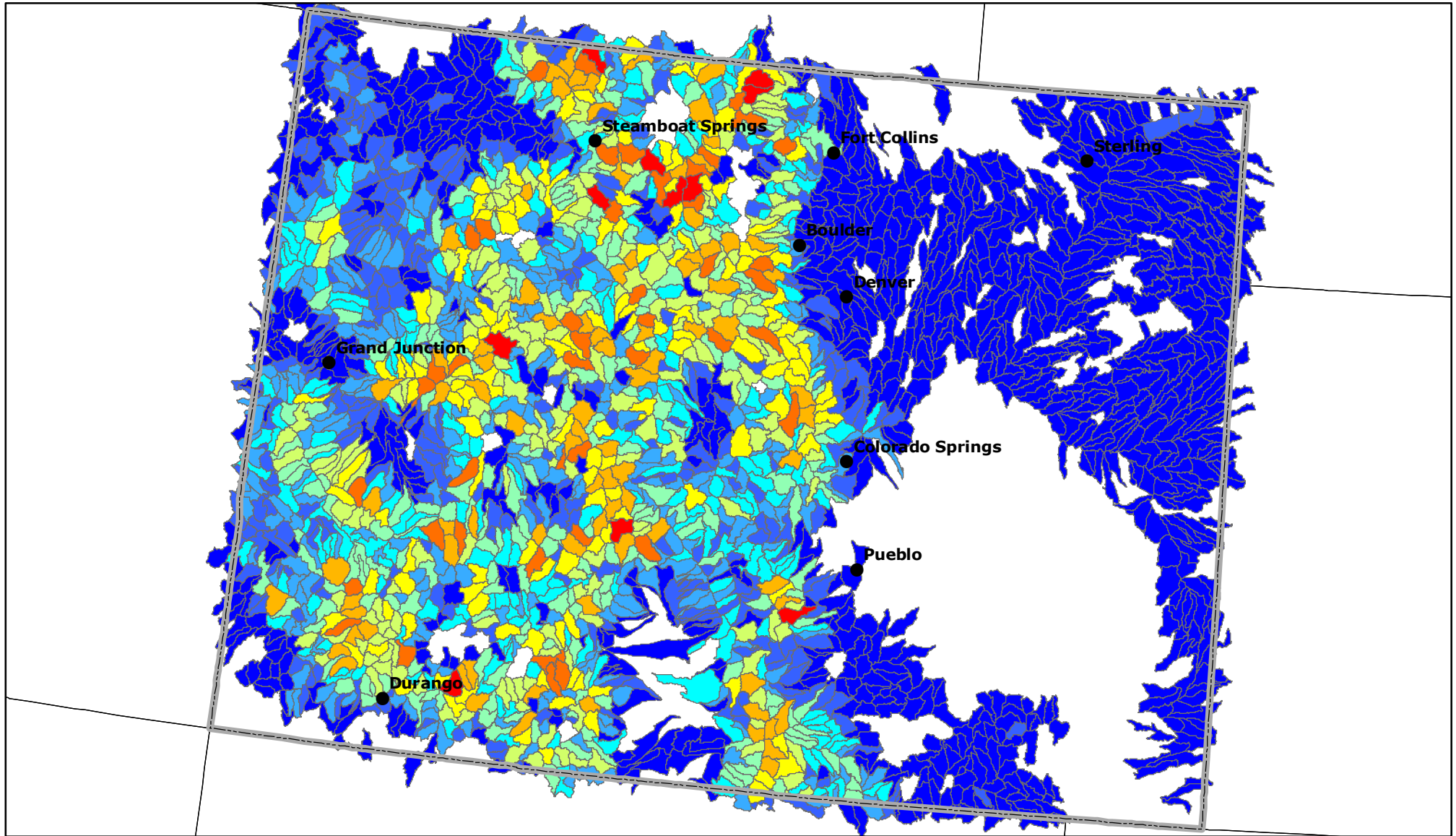
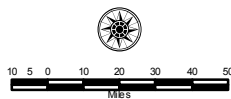


# Total Sustainable Tons of Woody Bio-Mass per Year



Available Tons of Woody Bio-Mass by Watershed (HUC 12) per Year

Tons/Acre	Color	Range
0.11 - 69.94	Dark Blue	636.02 - 867.15
69.95 - 183.30	Blue	867.16 - 1,149.33
183.31 - 303.85	Light Blue	1,149.34 - 1,503.28
303.86 - 457.22	Cyan	1,503.29 - 2,044.29
457.23 - 636.01	Light Green	2,044.30 - 3,128.94



The available tons of woody bio-mass by year calculated by the following formula ([available tons of woody bio-mass] \* 0.03 [a sustainable rate of harvest factor]). However, there are many instances that parts of a watershed are Wilderness areas or National Parks; therefore, the entire watershed is included in the analysis but only the woody bio-mass that is on public and private lands and not in Wilderness areas or National Parks are used in the calculation. Depicted here are 2,446 sixth level watersheds (HUC12) which contains woody bio-mass.

